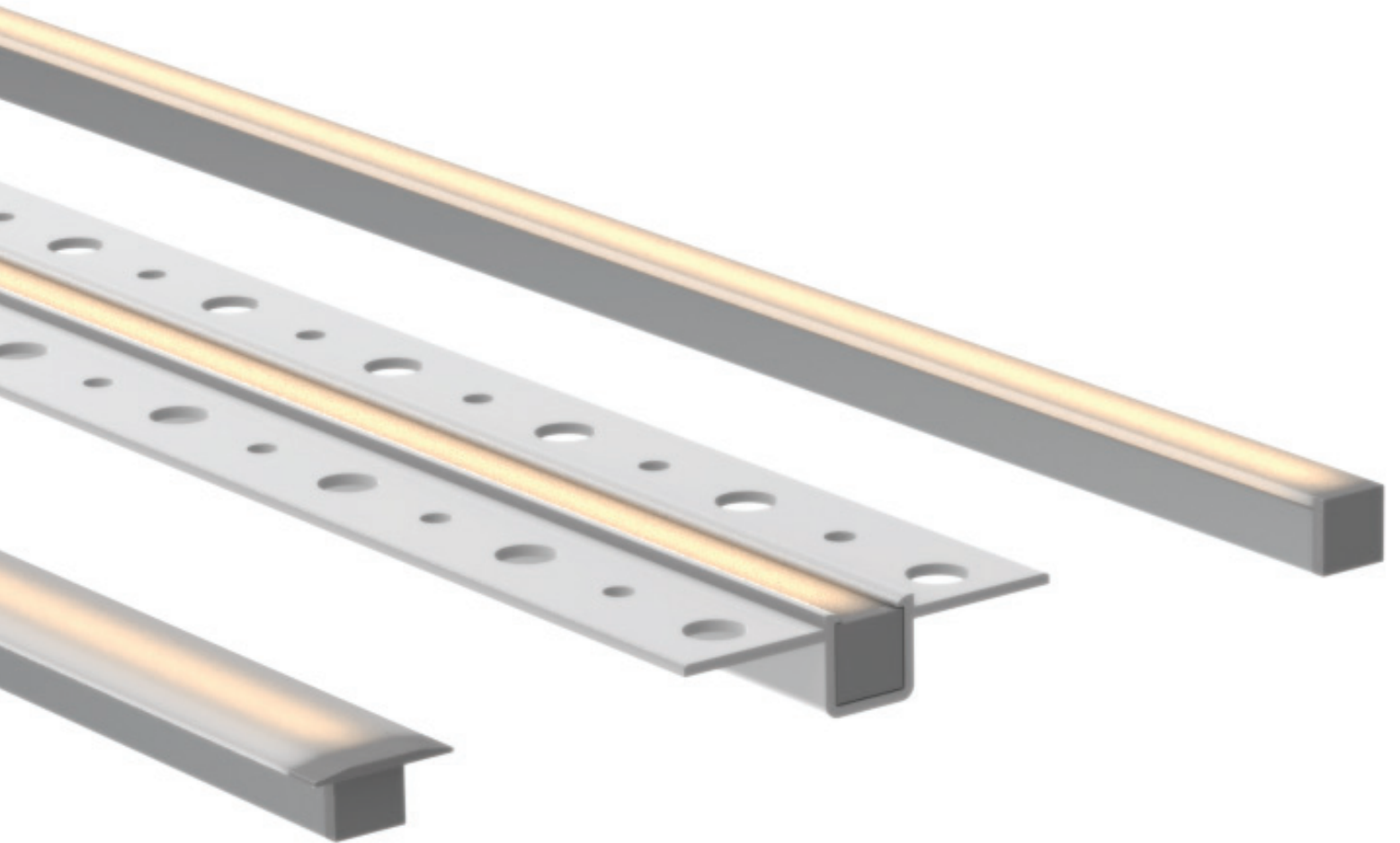
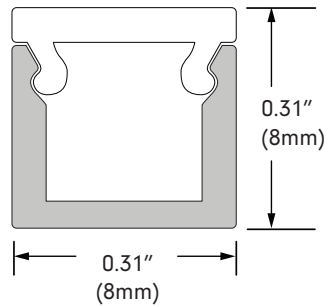
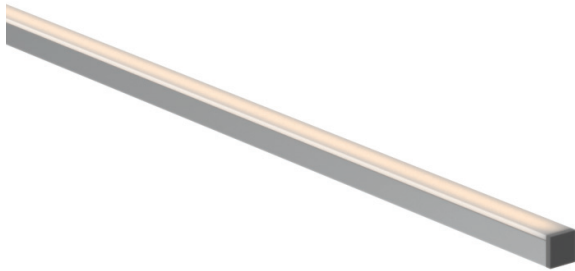


DUET 01 | COLLECTION

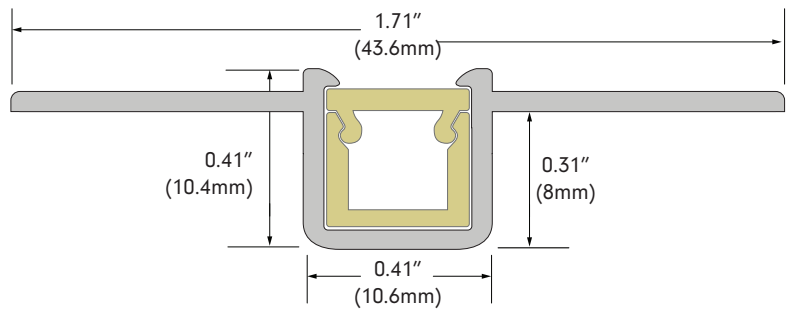
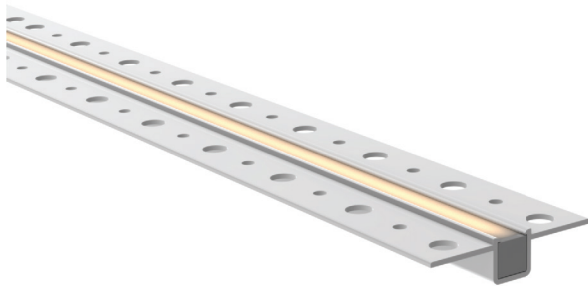
Design Guide



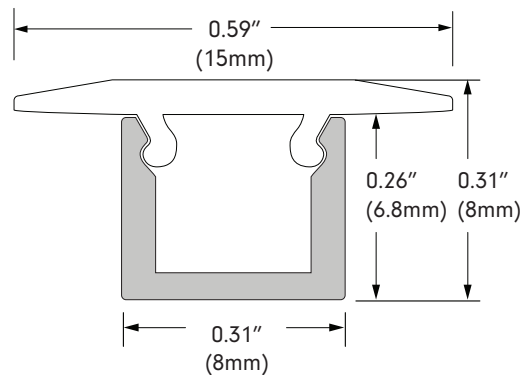
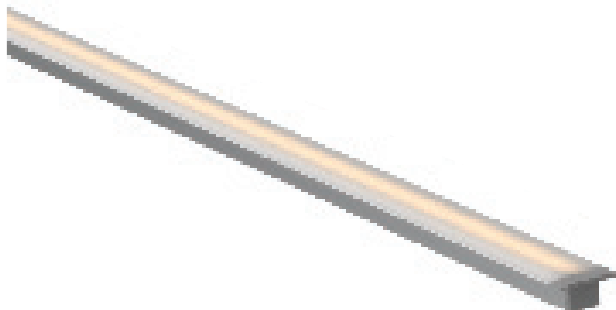
01 Profile & Dimensions



01 Mud-In Profile & Dimensions



01 Recessed Profile & Dimensions



Available TivoTape Options - Indoor

ELITE+
Slim

DUET 01 Surface & Mud-In Ordering Information



***DUET-01-CHAN-SLV-6.5**
Aluminum extrusion
6.5' Length
Surface/Mud-In/Recessed
application



***DUET-01-CHAN-M-6.5**
Mud-In PC fire-proof extrusion
6.5' Length



DUET-01-LNS-XXX-6.5
XXX = OPL (Opal), **CLR** (Clear),
DIF (Diffused), **BLK** (black)
PC lens, 6.5' Length
Surface/Mud-In application



DUET-04-REFLECT-6.5
PET inner channel reflector
White, 6.5' Length



DUET-01-EC-01
Solid End Cap
Surface/Mud-In application



DUET-01-EC-02
Powerfeed End-Cap
Surface/Mud-In application



DUET-01-CLP-SS
Sliver stainless steel clip
Surface application

DUET 01 Recessed Ordering Information



***DUET-01-CHAN-SLV-6.5**
Aluminum extrusion
6.5' Length
Surface/Mud-In/Recessed
application



DUET-01-LNS-R-XXX-6.5
XXX = OPL (Opal), **CLR** (Clear),
DIF (Diffused), **BLK** (black)
PC lens, 6.5' Length
Recessed application



DUET-01-EC-R-01
Solid End-Cap
Recessed application



DUET-01-EC-R-02
Powerfeed End-Cap
Recessed application

*Both **DUET-04-CHAN-SLV-6.5** and **DUET-04-CHAN-M-6.5** are required for mud-in application

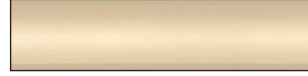
Diode Visibility



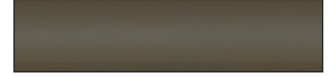
Opal lens



Clear lens



Diffused lens



Black lens